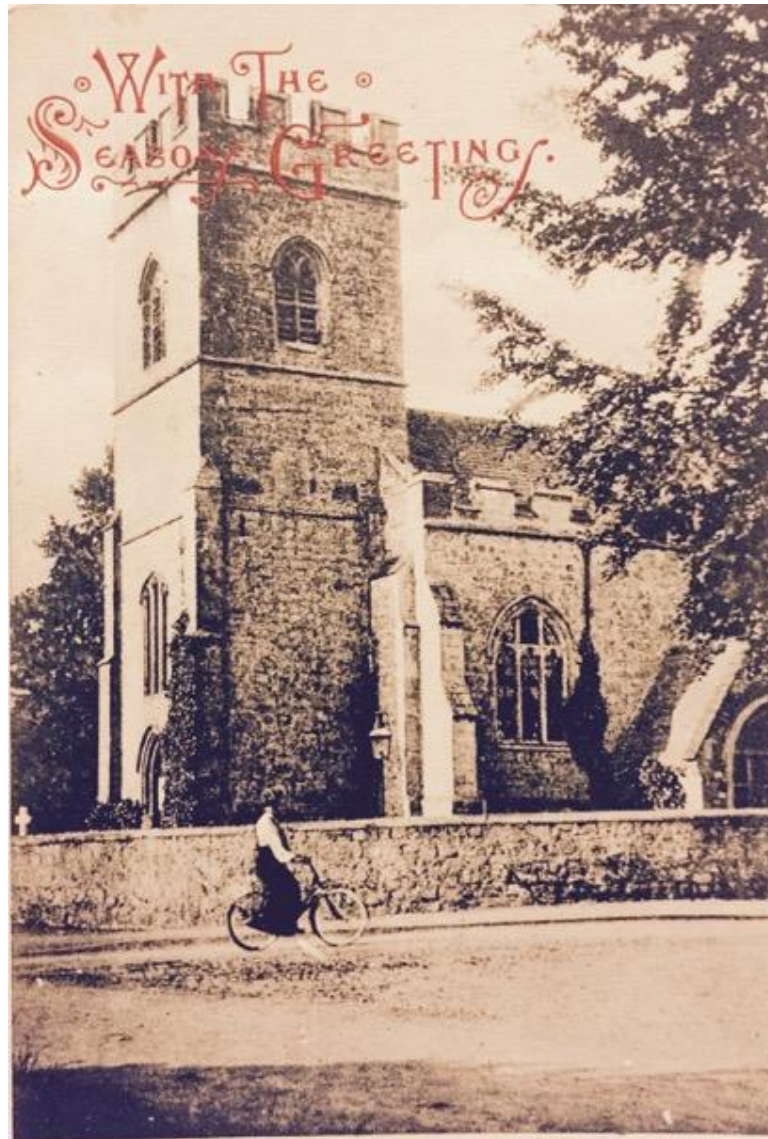


Old photographic images of Swanbourne enhanced

Swanbourne Church and Vicarage



Swanbourne Church.

French, Stationer, Winslow.



The original Elizabethan Vicarage, 1858



The Victorian replacement Vicarage, 1913



Before and after digital enhancement



Mr Hinton and Mr Gurnett

Before and after enhancement



Bert Ovens and Iris



The Boot Inn and Mr & Mrs Price



The Boot Inn

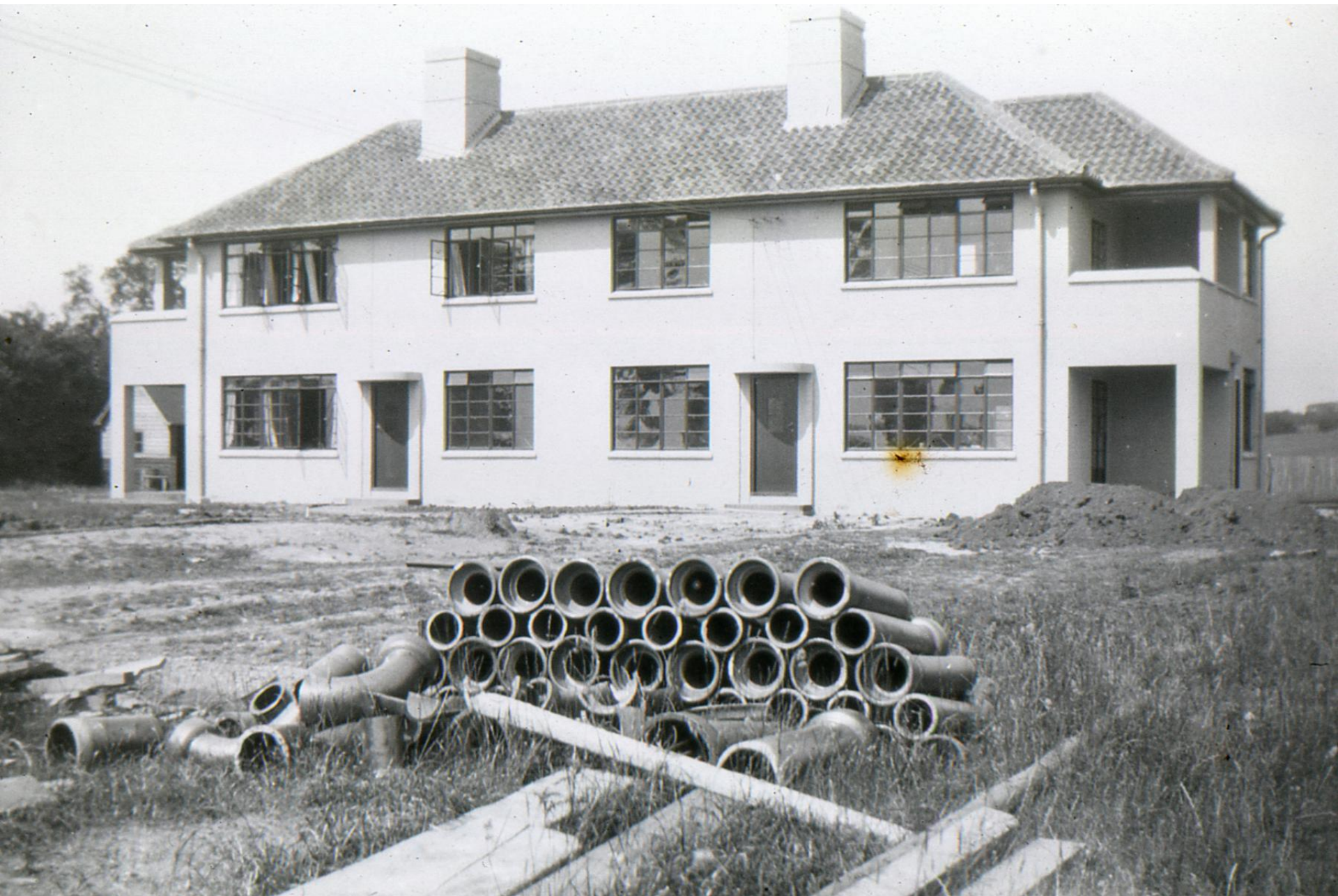


Swanbourne.

The Eastern edge of the village

Green Pastures in the early 1950s with Grandpa Dubberley waving a hoe.





Again in the 1950s a bunch of village kids. Front Peggy Owens with one of the Vicars twins on her back (Margaret) 2nd row Emily Davies with Elizabeth Vicars, 3rd row Daphne Lambourne with Margaret Gurnet, 4th row Alison's Brother Geoffrey with Alison, 5th row Chris Gurnet with David Holden, Back row John Colgrove with Christine Campbell. Christine's Grandmother, Annie lived in Green Pastures East.



The First Lord Cottesloe and family 1885, with Ben Alderman as footman



Deverells Farm



Game of football, 1913



Nearnton End, 1907





Swanbourne

Station Road at Charlton Hill Farm corner, 1913



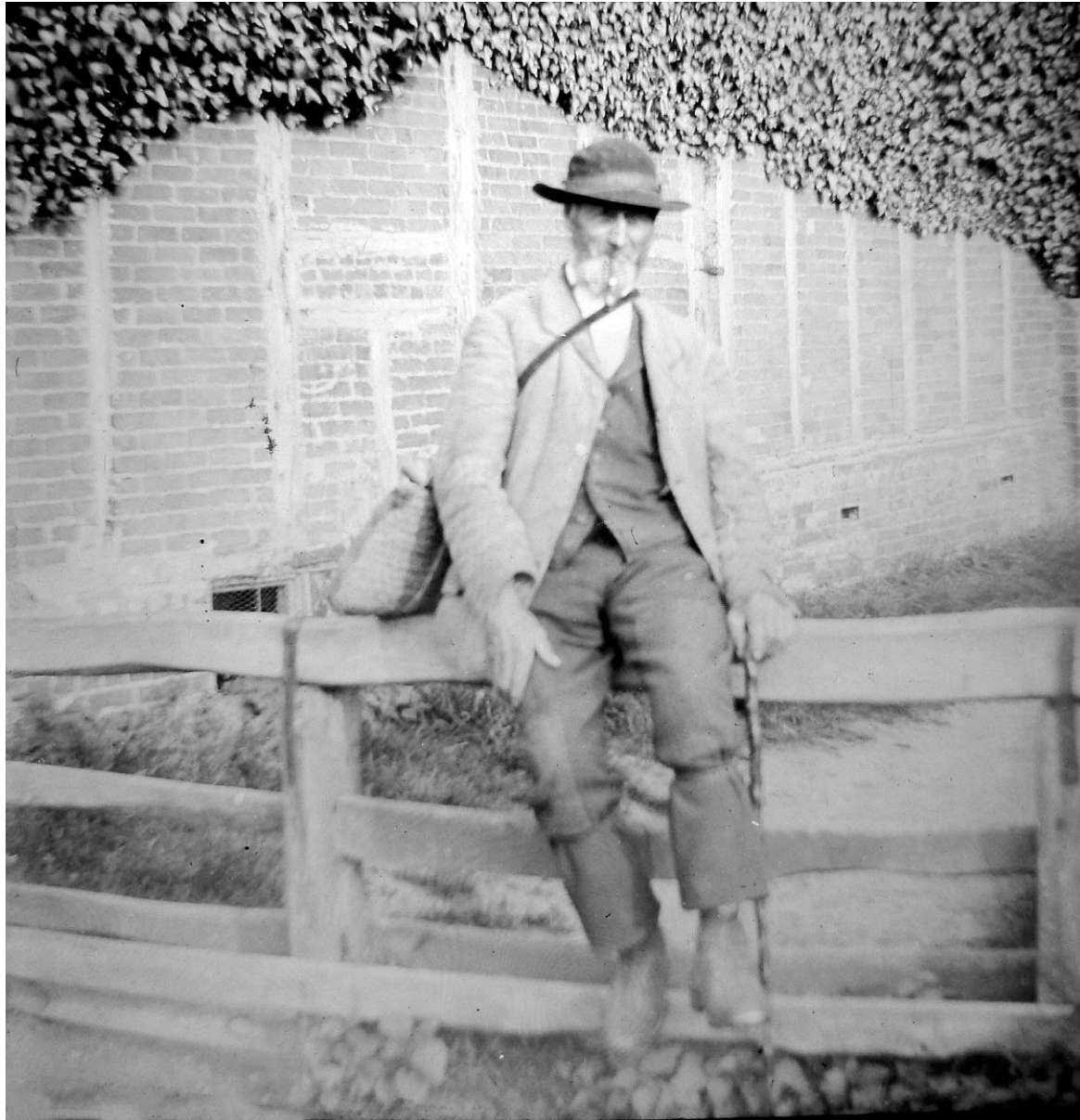
C1900 Clack Ford before the bridge over the stream was built in Station Road



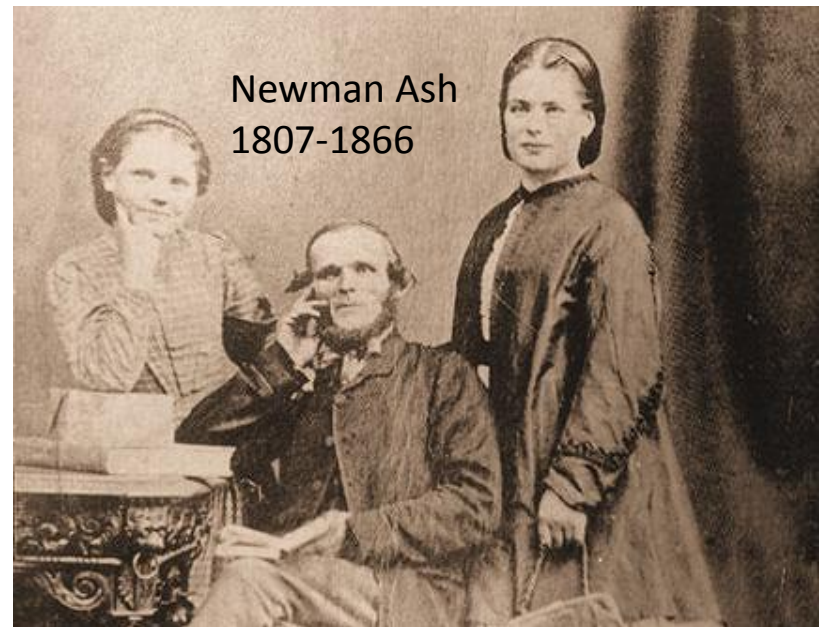
Blacksmiths, 1913



J. Harding by Ivy Farm, 1913

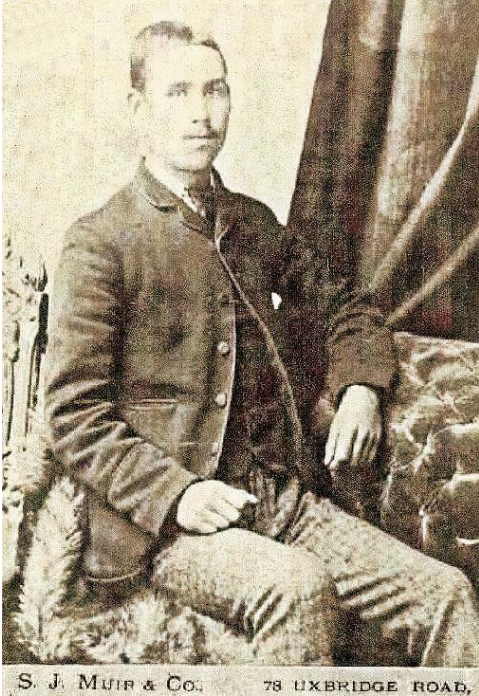


The Ash Family



The Gurnett Family

Charles Edwin Gurnett 1871-1897



Joe Gurnett



Alfred Anstee born 1844 Swanbourne died 1899 London

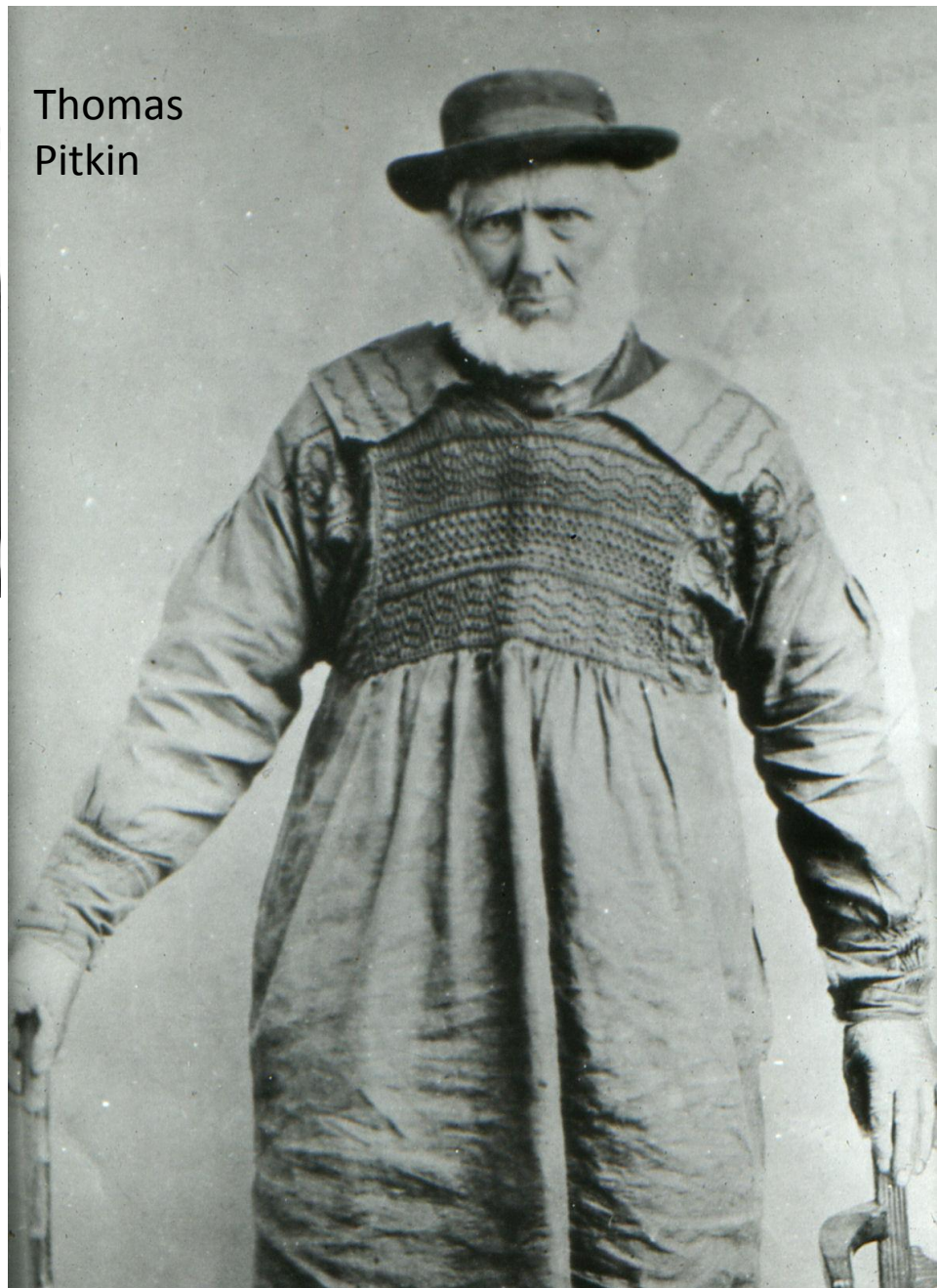




James
Colgrove



James Harding



Thomas
Pitkin

Grace Pitkin

The old Co-operative Store



B-3396

Re-thatching the co-operative store



The End

More examples of enhanced photographs may be viewed on the
Swanbourne History Website
www.swanbournehistory.co.uk